



## 2.0 PERMIT ADMINISTRATION

The following Frederick County personnel are responsible for the various program components that support compliance with the County's NPDES Municipal Separate Storm Sewer System (MS4) permit.



Shannon Moore, Project Manager IV, Watershed Management Section,  
Division of Public Works  
118 North Market St., Frederick, MD 21701  
301-600-1413

Manages NPDES MS4 Stormwater Permit. Develops and manages programs within permit scope. Manages multi-million dollar budget for operating funds, Capital Improvement Projects and Grants. Manages NPDES consultants. Supervises two staff people. Oversees CIP projects. Writes technical documents. Conducts GIS and other technical projects related to NPDES permit compliance. Maintains project schedules. Coordinates with outside agencies and groups. Conducts community outreach events.

David Ennis, P.E., Department Head, Program Development and Management, Division of Public Works  
118 North Market St., Frederick, MD 21701  
301-600-1557

Supervises NPDES Program Manager. Controls budgets and ensures County management adequately supports permit. Supervises Watershed Management Section, GIS Section.

Betsy Smith, Office Chief, Division of Permitting and Development Review  
12 E Church Street, Frederick, MD 21701  
301-600-2961

Manages Development Review for Stormwater Management, including promulgation of County Stormwater ordinance. Supervises Environmental Compliance Section.

Steve Fellers, Construction Manager I, Environmental Compliance Section, Division of Permitting and Development Review  
118 North Market St., Frederick, MD 21701  
301-600-3507

Runs Sediment and Erosion Control Program. Supervises collection of information for Permit that includes grading permits, stormwater facility maintenance inspections, and green card class scheduling.

Al Hudak, Director, Division of Public Works  
118 North Market St., Frederick, MD 21701  
301-600-1128

Controls budgets and ensures County management adequately supports permit. Provides additional oversight for permit management.

Kay Schultz, Community Restoration Coordinator, Watershed Management Section,  
Division of Public Works  
118 North Market St., Frederick, MD 21701  
301-600-1741

Supports NPDES activities through implementation of Watershed Restoration Action Strategy reports for Upper and Lower Monocacy Watersheds in Frederick County.

**Note:** This was the WRAS Coordinator position until July 2005, at which time the title changed to Community Restoration Coordinator when the efforts of the Coordinator shifted from WRAS planning to WRAS implementation and community restoration.

Jessica Hunicke, Project Manager I, Watershed Management Section, Division of Public Works

118 North Market St., Frederick, MD 21701  
301-600-1350

Supports NPDES activities, including Illicit Discharge Detection and Elimination program implementation, TMDL pollutant load tracking, and Website production.

Doug Reedy, GIS Manager, GIS Section, Division of Public Works

118 North Market St., Frederick, MD 21701  
301-600-2968

Supervises GIS data collection for NPDES permit. Supervises two staff on Storm Drain Data Collection. Provides map information for permit requirements on request.

Barb Linton, GIS Technician II, GIS Section, Division of Public Works

118 North Market St., Frederick, MD 21701  
301-600-2384

Creates data layers for NPDES-required GIS coverages. Digitizes storm drains and drainage areas. Prepares outreach materials and posters for NPDES.

Jason Jones, GIS Technician II, GIS Section, Division of Public Works

118 North Market St., Frederick, MD 21701  
301-600-2385

Creates data layers for NPDES-required GIS coverages. Digitizes storm drains.

Dave Crable, Project Manager IV, Division of Permitting and Development Review

12 E Church Street, Frederick, MD 21701  
301-600-1137

Maintains database of stormwater management facilities.

The organizational chart in Figure 2-1 depicts the organization of the Department of Program Development and Management, the unit within the County's Division of Public Works that houses the Watershed Management Section, which is primarily responsible for compliance with the NPDES permit.

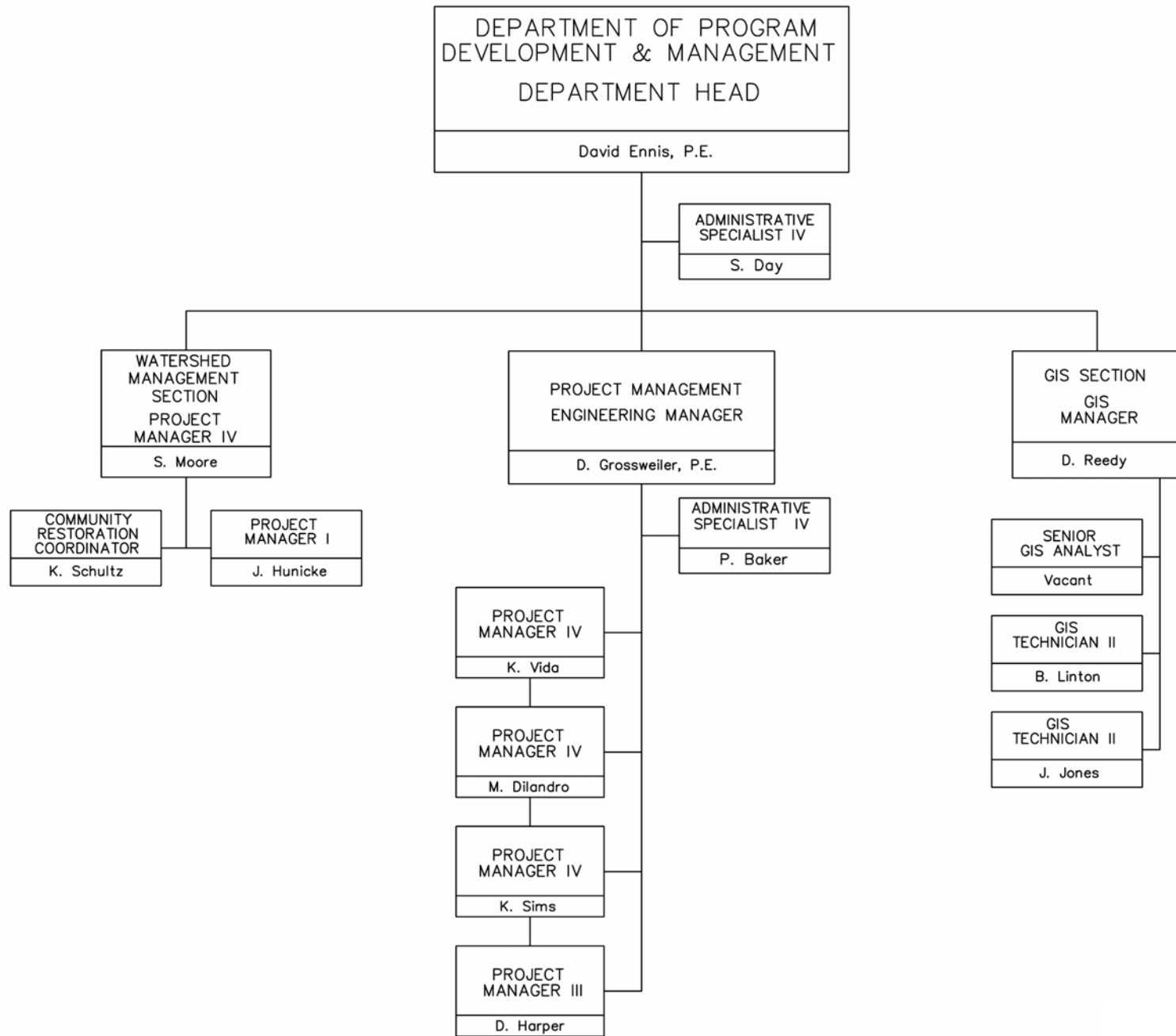


Figure 2-1. Organizational chart

