

APPENDIX G

EVALUATING THE EFFECTIVENESS OF THE *2000 MARYLAND STORMWATER DESIGN MANUAL* FOR STREAM CHANNEL PROTECTION – SUPPORTING MATERIALS

1. Longitudinal and Cross-Section Stream Profiles
2. HEC-RAS Cross-Section Flow Elevations and Model Run Results

LONGITUDINAL AND CROSS-SECTION STREAM PROFILES

Longitudinal Profile XS-02 --> XS-01 (Upper Portion): 2007

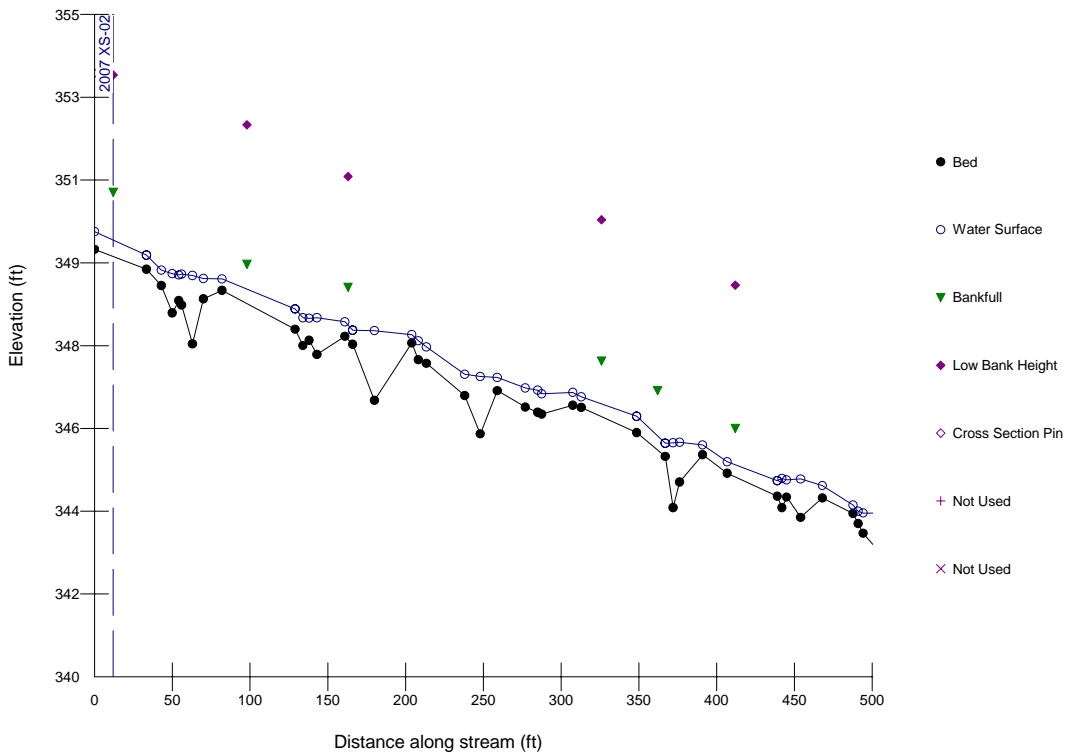


Figure G-1. Longitudinal profile from Tributary 1 XS-02 down to XS-01, extending from Station 0+00 down to Station 5+00.

Longitudinal Profile XS-02 --> XS-01 (Lower Portion): 2007

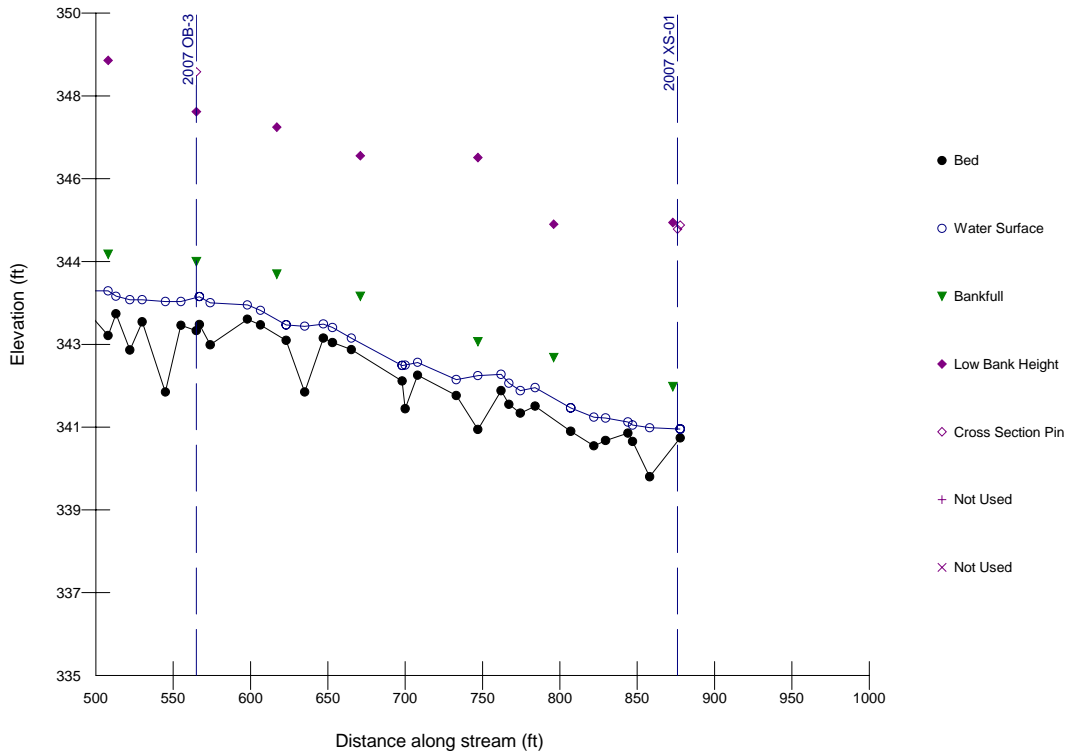


Figure G-2. Longitudinal profile from Tributary 1 XS-02 down to XS-01, extending from Station 5+00 down to Station 9+00.

Longitudinal Profile XS-04 --> XS-03 (Upper Portion): 2007

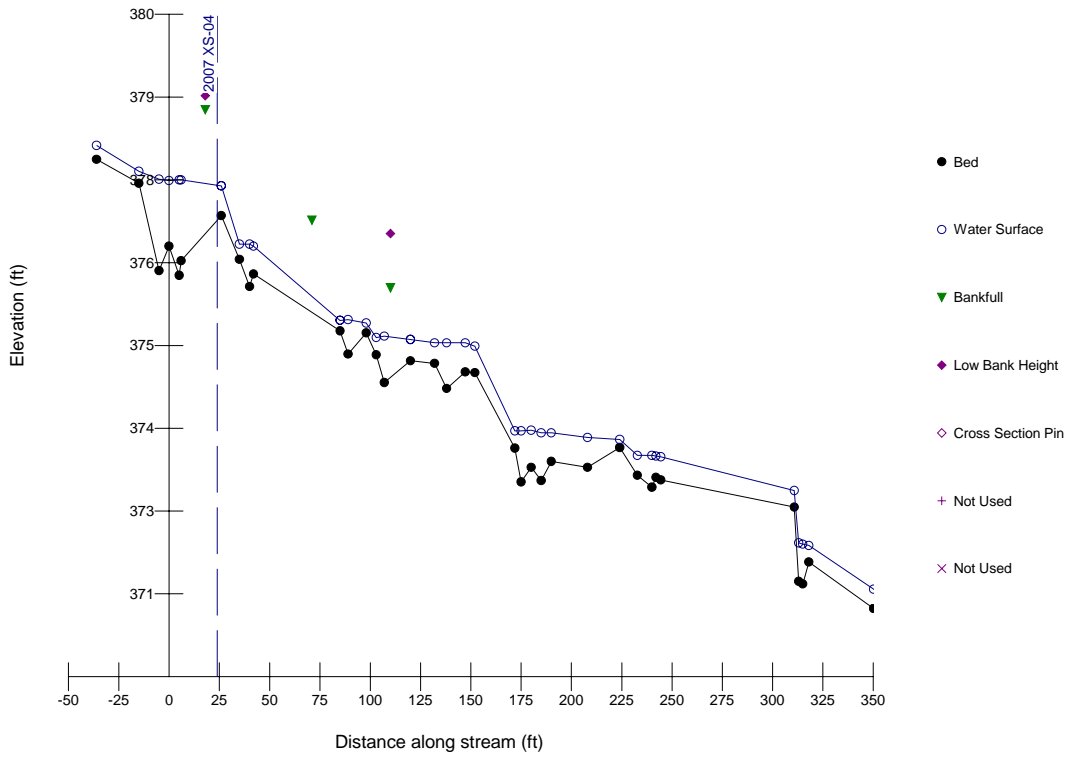


Figure G-3. Longitudinal profile from Tributary 1 XS-04 down to XS-03, extending from Station 0+00 down to Station 3+50

Longitudinal Profile XS-04 --> XS-03 (Lower Portion): 2007

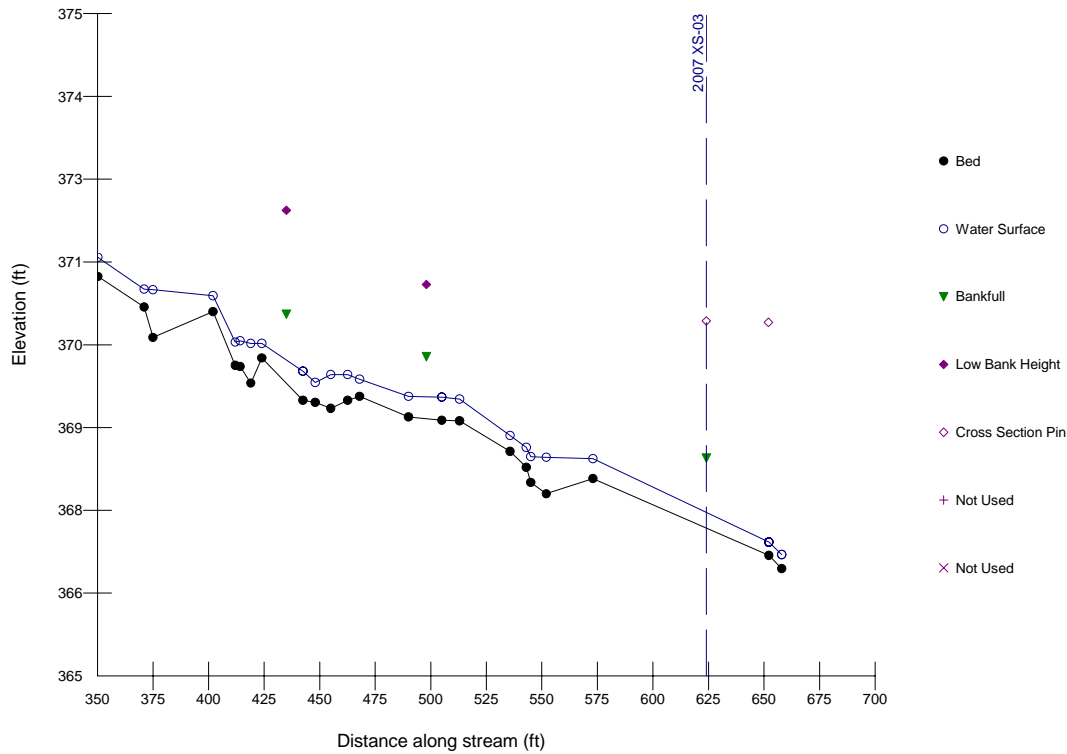


Figure G-4. Longitudinal profile from Tributary 1 XS-04 down to XS-03, extending from Station 3+50 down to Station 6+65

Longitudinal Profile Tributary 1A (Upper Portion): 2007

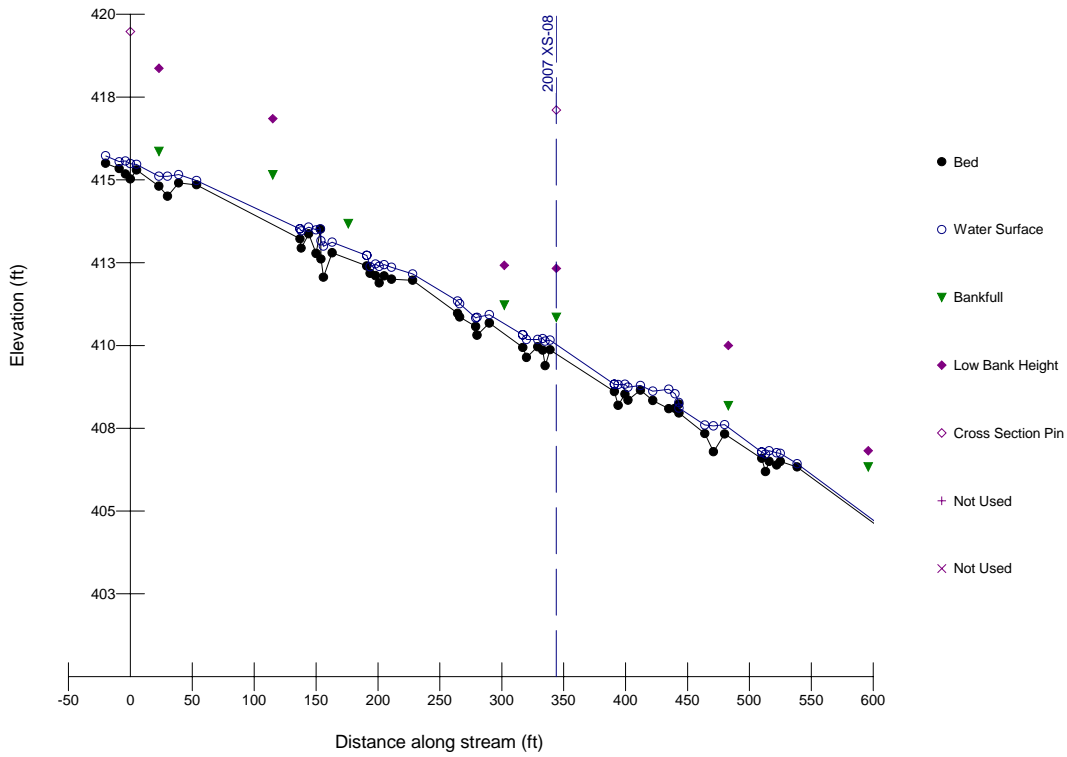


Figure G-5. Longitudinal profile from Tributary 1A, extending from Station 0+00 down to Station 6+00

Longitudinal Profile Tributary 1A (Lower Portion): 2007

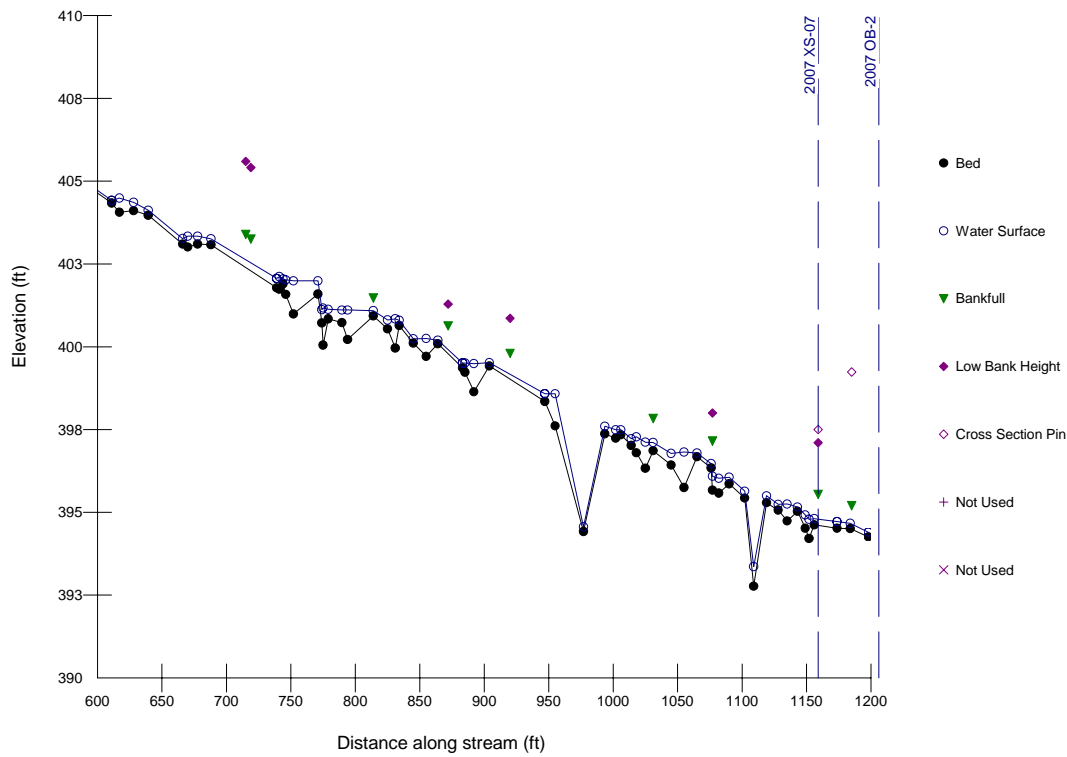


Figure G-6. Longitudinal profile from Tributary 1A, extending from Station 6+00 down to Station 12+00

Longitudinal Profile Tributary 1B (Upper Portion): 2007

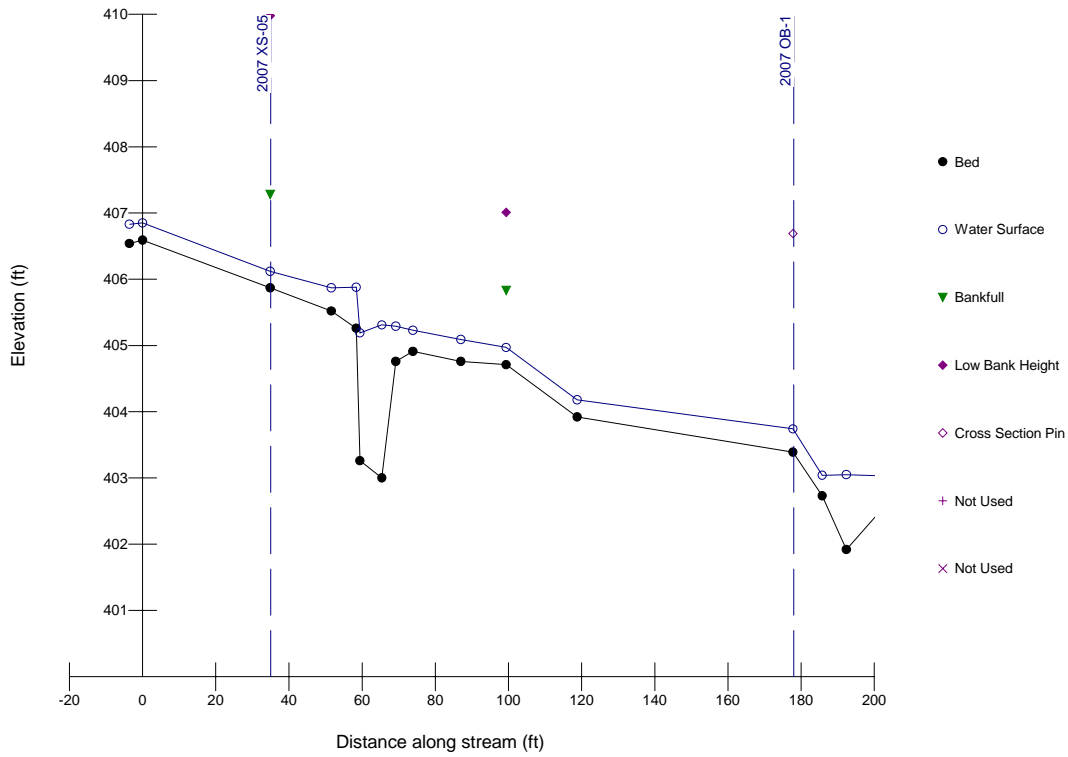


Figure G-7. Longitudinal profile from Tributary 1B, extending from Station 0+00 down to Station 2+00

Longitudinal Profile Tributary 1B (Lower Portion): 2007

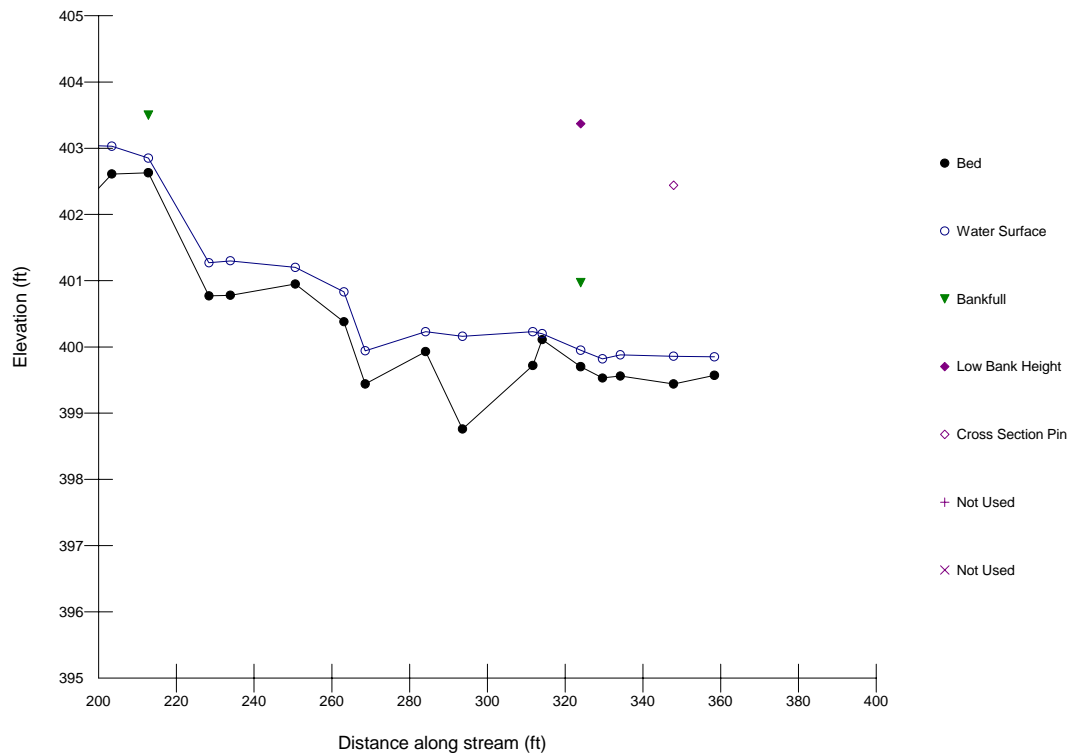
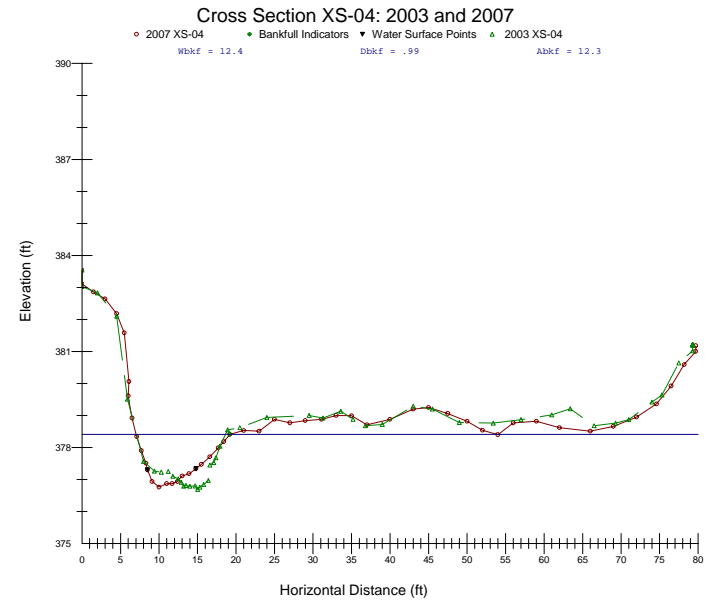
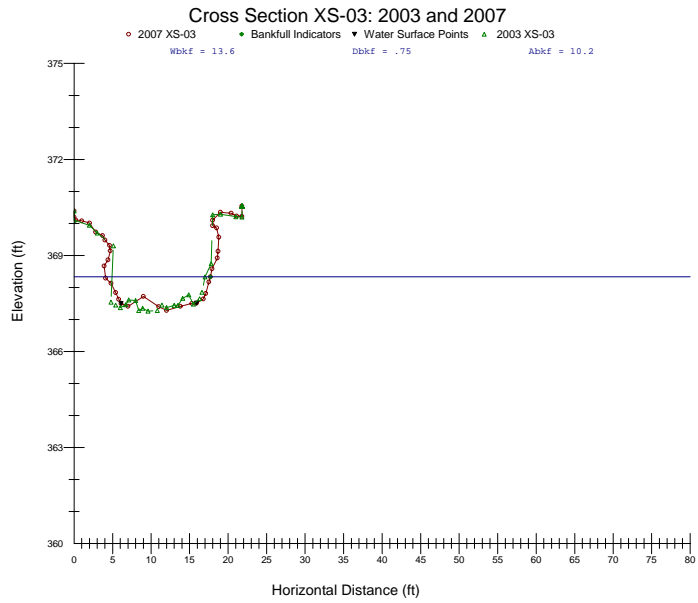
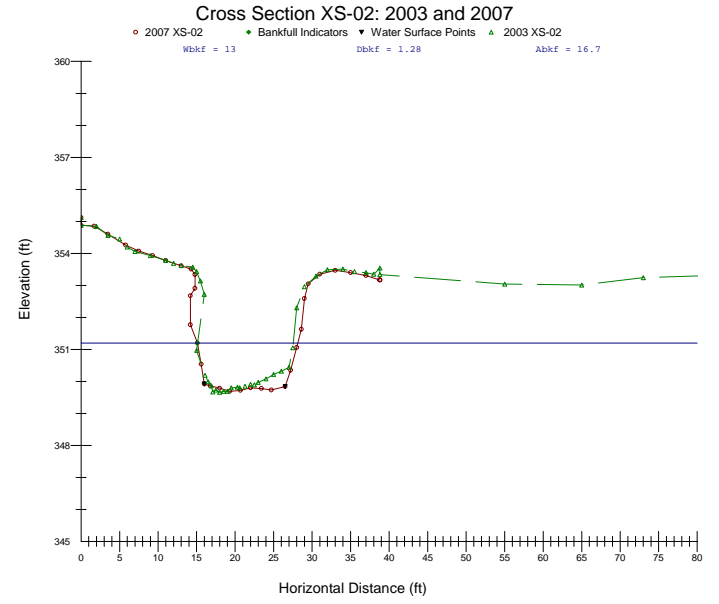
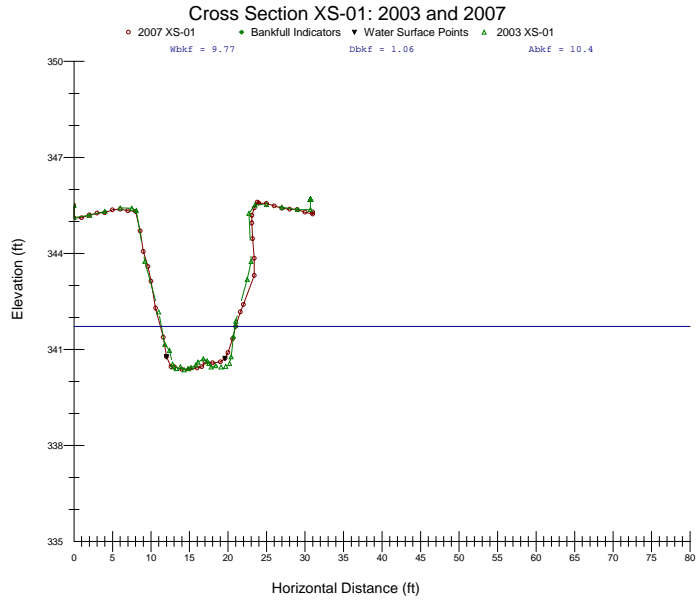
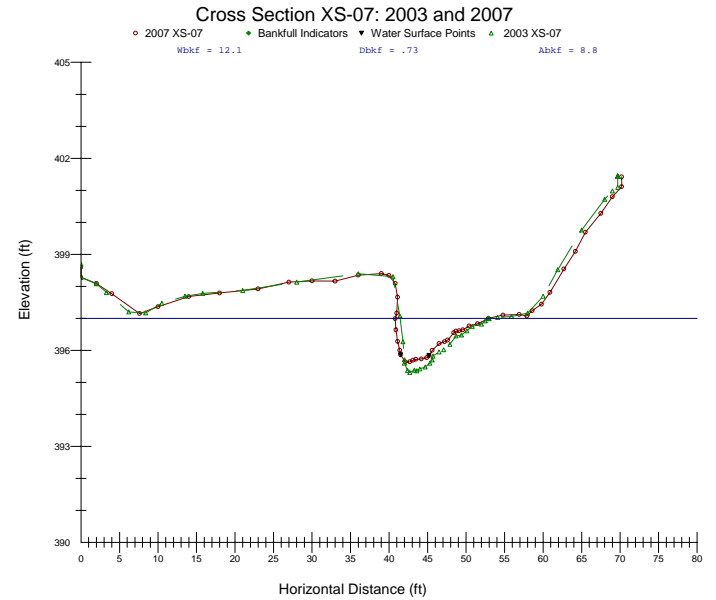
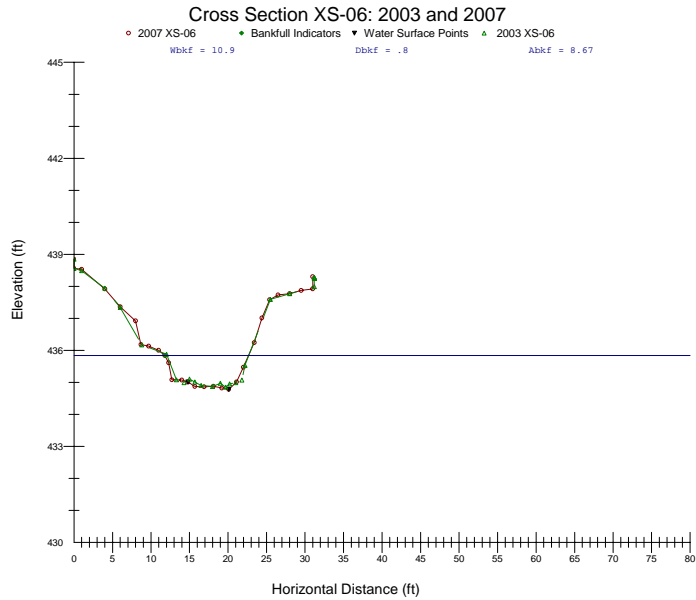
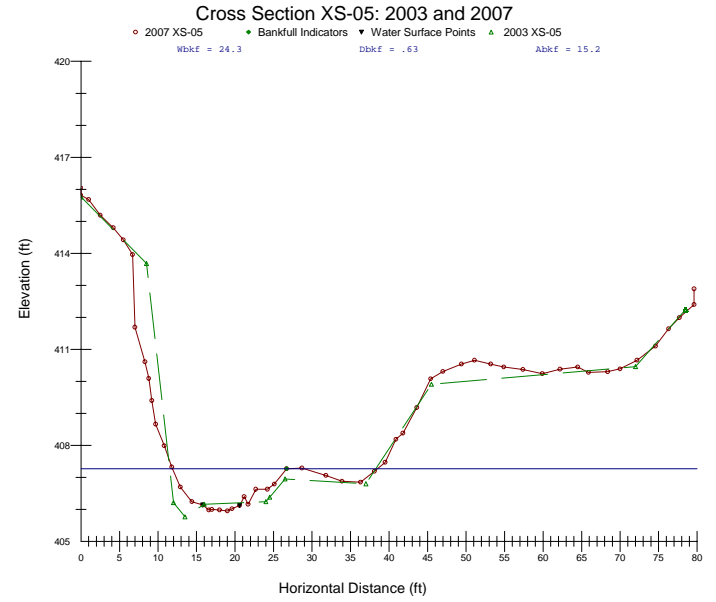
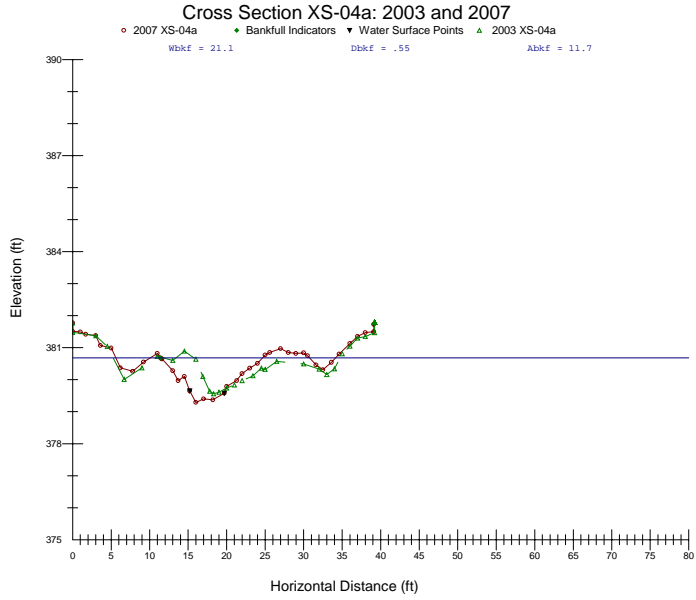
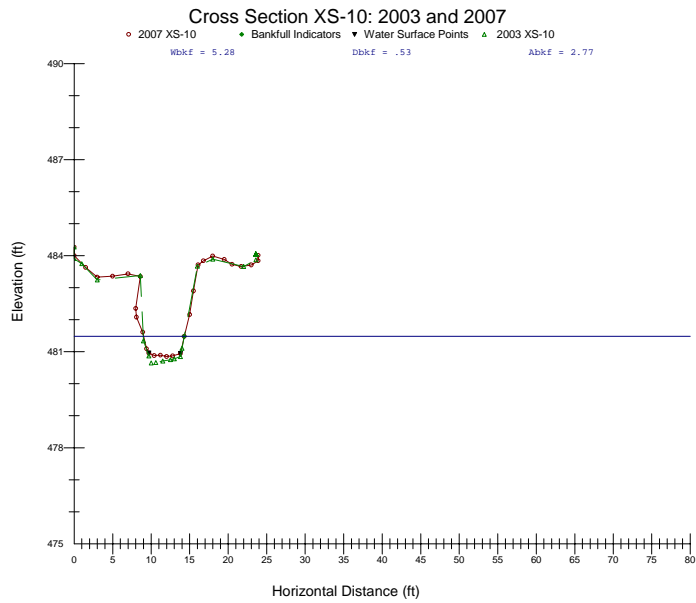
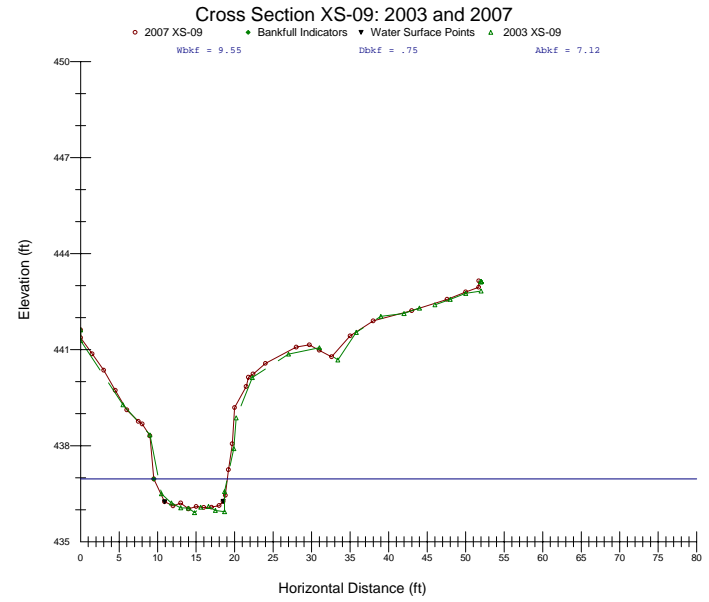
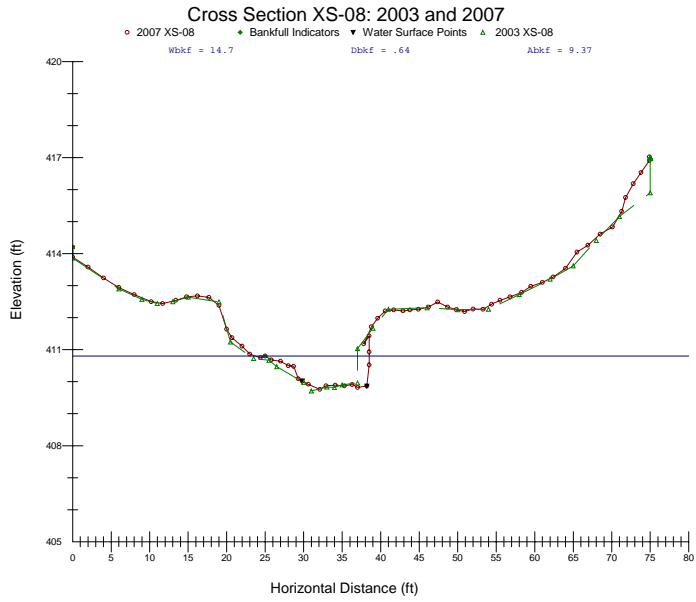


Figure G-8. Longitudinal profile from Tributary 1B, extending from Station 2+00 down to Station 3+60

Rifle Cross-Sections







Outside Bend Cross-Sections

