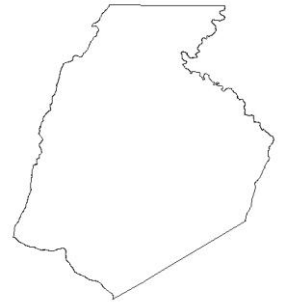




2.0 PERMIT ADMINISTRATION

The following Frederick County personnel are responsible for the various program components that support compliance with the County's NPDES Municipal Separate Storm Sewer System (MS4) permit.

Division of Public Works (DPW) – 118 N. Market St., Frederick, MD 21701



The organizational chart shown in Figure 2-1 depicts the organization of the Department of Program Development and Management, the unit within the County's Division of Public Works that manages the County's NPDES permit. Please note there are a number of personnel within the Department of Program Development and Management and all positions are listed in the organizational chart. Those personnel that are responsible for projects related to compliance with the NPDES permit have been identified below.

- Shannon Moore, Project Manager IV, Watershed Management Section
301.600.1413
Manages NPDES MS4 Stormwater Permit. Develops and manages programs within permit scope. Manages multi-million dollar budget for operating funds, Capital Improvement Projects and Grants. Manages NPDES consultants. Supervises two staff people. Oversees CIP projects. Writes technical documents. Conducts GIS and other technical projects related to NPDES permit compliance. Maintains project schedules. Coordinates with outside agencies and groups. Conducts community outreach events.
- David Ennis, P.E., Department Head, Program Development and Management
301.600.1557
Supervises NPDES Program Manager. Controls budgets and ensures County management adequately supports permit. Supervises GIS Section and WMS.
- Al Hudak, Director, Division of Public Works
301.600.1128
Controls budgets and ensures County management adequately supports permit. Provides additional oversight for permit management.
- Heather Montgomery, Community Restoration Coordinator, Watershed Management Section
301.600.1741
Supports NPDES activities through implementation of community restoration projects. Coordinates the Monocacy and Catoctin Watershed Alliance to leverage NPDES MS4 permit compliance efforts.

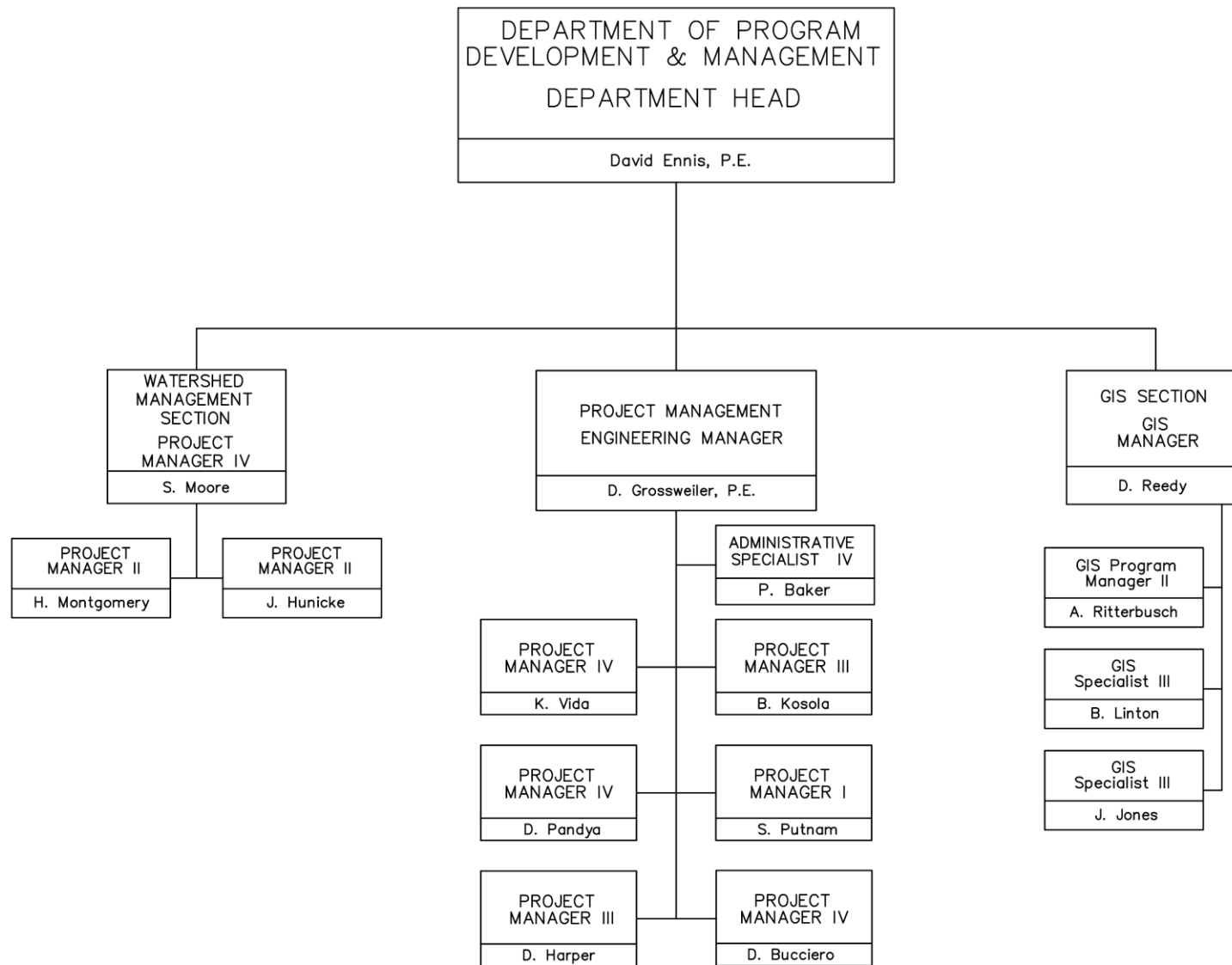
- Jessica Hunicke, Project Manager III, Watershed Management Section
301.600.1350
Supports NPDES activities, including Annual Report submission, Urban Wetlands Program, Illicit Discharge Detection and Elimination program implementation, TMDL pollutant load tracking, and Industrial Discharge permits.
- Darlene Bucciero, Project Manager IV, Office of Project Management
301.600.2952
Supports NPDES activities, manages NPDES related CIP projects.
- Doug Reedy, GIS Manager, GIS Section
301.600.2968
Supervises GIS data collection for NPDES permit. Provides map information for permit requirements on request.
- Andreas Ritterbusch, GIS Project Manager II, GIS Section
301.600.2920
Develops programs for GIS applications related to NPDES requirements.
- Barb Linton, GIS Specialist III, GIS Section
301.600.2384
Creates data layers for NPDES-required GIS coverages.
- Jason Jones, GIS Specialist III, GIS Section
301.600.2385
Creates data layers for NPDES-required GIS coverages.

Division of Permitting and Development Review – 30 N. Market St., Frederick, MD 21701

- Betsy Smith, Deputy Director
301.600.2961
Manages Development Review for Stormwater Management, including promulgation of County Stormwater ordinance. Supervises Environmental Compliance Section.
- Rick Masser, Construction Manager II, Environmental Compliance Section
301.600.3507
Manages Sediment and Erosion Control Program. Supervises collection of information for permit that includes grading permits, stormwater facility maintenance inspections, and green card class scheduling.
- Dave Crable, Project Manager IV
301.600.1137
Maintains database of stormwater management facilities.

Other County Offices

- Tim Goodfellow, Principal Planner II, Division of Planning & Zoning
12 E Church Street, Frederick, MD 21071
301.600.2508
Coordinates planning activities related to NPDES permit.
- Hilari Varnadore, Director, Office of Environmental Sustainability
12 E. Church Street, Frederick, MD 21701
301.600.7414
Coordinates County departments, businesses, residents, and other organizations to advance practices, policies, and partnerships that work towards promoting a more sustainable community and environment in Frederick County.



Revised: 2/25/2010
 Contact: Barb Linton for revisions.
 x12384

Figure 2-1. Organization chart